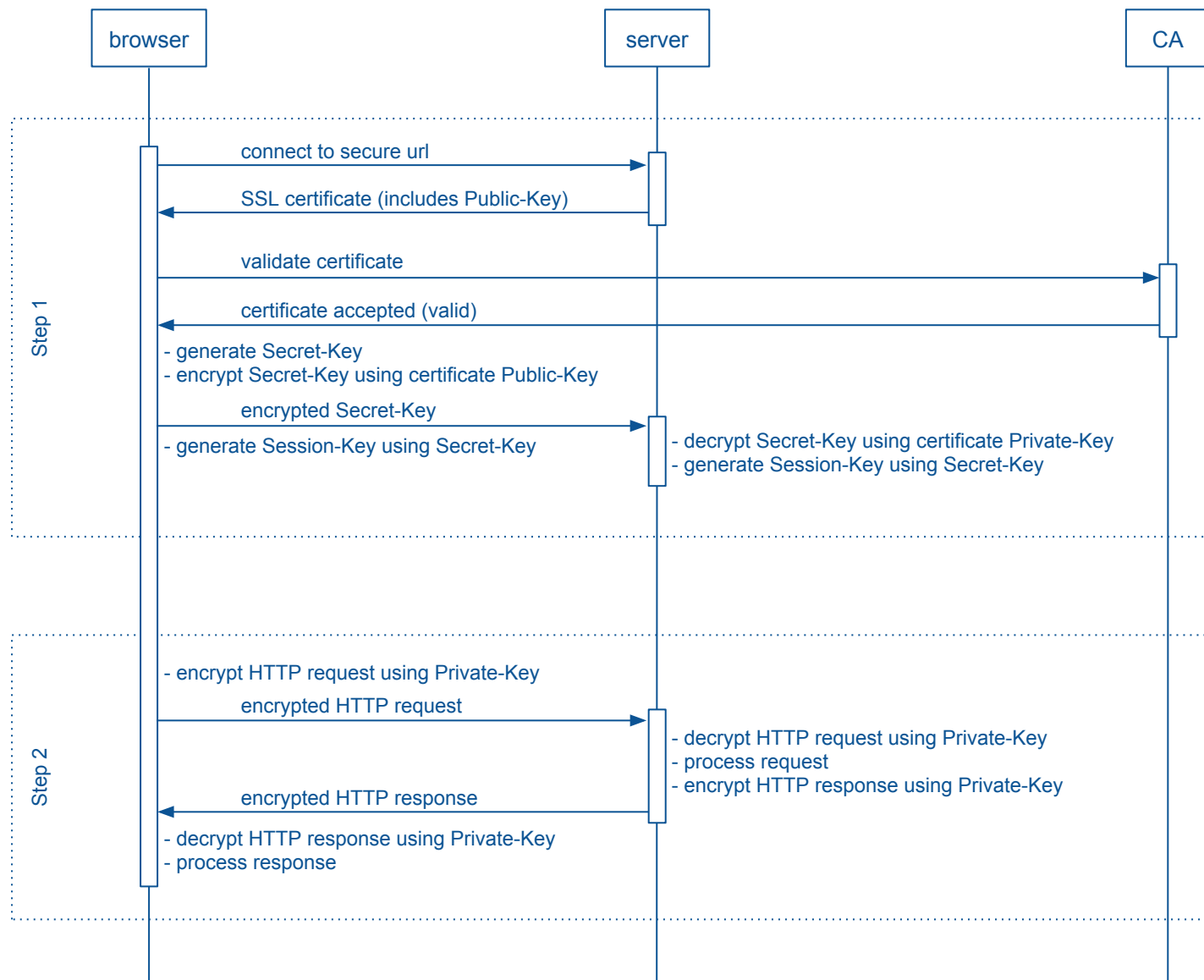


HTTPS Sequence Diagram

HTTPS uses SSL/TLS for secure communication between the browser and server.

Step 1: Public-Key encryption is first used to setup a secure connection

Step 2: Private-Key encryption is then used for all subsequent communication



* SSL key exchange is complete after Step 1. Subsequent communication will use Private-Key encryption, the Session-Key will be used as the Private-Key.

* Private-Key Encryption = Symmetric Encryption

* Public-Key Encryption = Asymmetric Encryption

* CA = Certificate Authority

* HTTPS TCP Port 443